



SUPPORTING INNOVATION:
FROM CONCEPT TO FULL PRODUCTION

LIBRA
INDUSTRIES

LIBRA DELIVERS FOR MISSION CRITICAL INDUSTRIES

When high reliability matters for industries where lives are at stake, Libra Industries excels at highly complex product solutions. Our sophisticated manufacturing solutions can be utilized in many industries including: semiconductor capital equipment, medical device, aerospace and defense, and industrial automation. With over 85 years of specialty equipment design and manufacturing experience, there is hardly an industry that we have not supported and manufactured complex product builds for. Our team approach including design & engineering, program management, supply chain, complimented by our manufacturing capabilities continue to provide solutions that exceed some of our most challenging customer requirements.

WHEN RELIABILITY MATTERS, LIBRA DELIVERS

Libra delivers customized manufacturing solutions for high complexity system integration requirements. Our focus is on products that require high-complexity and high-reliability.

We have expertise in large complex electromechanical assemblies, both at the final product level as well as sub-assembly levels. From advanced robotics to intricate semiconductor capital equipment requirements, we combine system level with vertical capabilities and know how, that allows us to understand the technical underpinnings of your product. Additionally, our well-equipped clean room facility allows us to deliver to the cleanliness standards that your product requires.

INVESTING IN OUR CUSTOMERS

Our continued investments in the best equipment provide our customers the support they need for scalable growth from rapid prototyping to Tier 1 level production. Some of our top-of-the-line equipment includes:

- Selective Solder
- Automated Functional & ICT Testing
- Solder Screen Printer
- High Speed Epoxy/Paste Dispenser
- In-Line UV and Thermal Conformal Coating Ovens



UNRIVALED SUPPORT SERVICE

Libra's systems integration offerings do not stop with our state-of-the-art equipment. Our support service is among the best in the industry. Whether you are looking for support in engineering, prototyping, supply chain or program management, our team of highly trained professionals are ready to help you through the process



ELECTRONIC ASSEMBLIES

With over 35 years of Printed Circuit Board Assembly (PCBA) manufacturing experience, Libra is a leader in electronic assemblies from sub-systems to final assembly. We are known for our PCBA capabilities from quick prototype turnaround, NPI, and complete assembly of highly complex products. Our leadership team is a combination of leaders from our legacy businesses, alongside a group of Tier 1 EMS seasoned business and operations leaders, with deep roots in scalable, repeatable manufacturing solutions, systems, and processes.

As our customers all have a broad range of electronics capabilities and can tailor accordingly. Some of our capabilities include:

- Rapid PCBA Prototyping
- Design Capabilities and Engineering Support
- Clean Room Capabilities
- New Product Introduction
- Printed Circuit Board Assembly and Integration
- Cables, Controllers, Power Module Integration
- Sub-System Software Configuration
- High Speed Selective Solder
- Conformal Coating (Urethane, Acrylic, Silicone, Epoxy, Synthetic Rubber)
- Inspection and Testing:
 - CT X-Ray
 - Automated Functional Development
 - Boundary Scan
 - Flying Probe
 - BGA Replacement /Repair
 - 3D Solder Paste/AOI Inspection

WHEN CONSISTENCY MATTERS, LIBRA DELIVERS WITH BEST-IN-CLASS PROCESSES

Our customers have come to rely on us because they know their products will consistently be of the highest quality with our scalable and repeatable processes.

Our quality system is bolstered by the strength of our information, our access to that information, and the way that we use that information to continuously improve the solutions for our customers.

Our decisions are based on the wealth of data through our Quality Management System and IT infrastructure. With the processes we have in place through our data software systems, we are able to predict problems and avoid risks for our customers.

We empower our associates with the knowledge to ensure that quality products are delivered to all internal and external customers. We are committed to continuous improvement and operational excellence.

**AS
9100**

**ISO
13485**

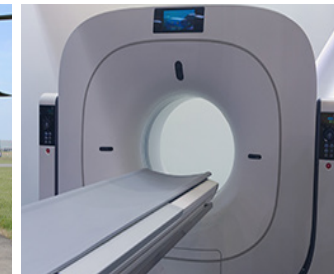
**ISO
9001:2015**

**ISO
14001**

**ISO
CLEANROOM
CLASS 7 (10,000)**



**FDA
REGISTERED**



MEDICAL & LIFE SCIENCE | MILITARY & AEROSPACE | SEMI-CAP | INDUSTRIAL EQUIPMENT

For more information .

CONTACT US

SALES@LIBRAIND.COM OR VISIT US AT

WWW.LIBRAINDUSTRIES.COM

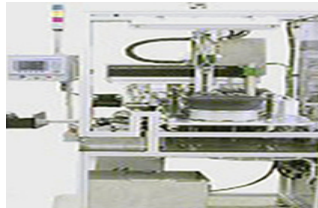


LIBRA

INDUSTRIES

Libra Industries is a **SYSTEMS INTEGRATOR**.
We Provide Complete Manufacturing Solutions
with Exceptional Customer Service.

CUSTOM SOLUTIONS:



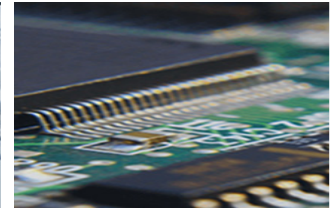
SYSTEMS
INTEGRATION



CLEAN ROOM
CAPABILITIES



PRECISION
MACHINING



PRINTED CIRCUIT
BOARD ASSEMBLY



WIRE HARNESS &
CABLE ASSEMBLY



PROTOTYPE
& NPI



METAL
FABRICATION



DIVERSIFIED TECHNOLOGY MARKETS:



INDUSTRIAL



ROBOTICS



SEMI-CAP



MILITARY/
AEROSPACE



MEDICAL

ISO
9001:2015

ISO
13485

ISO
14001

AS
9100

ISO
CLEANROOM
CLASS 7 (10,000)

FDA
REGISTERED



WWW.LIBRAINDUSTRIES.COM